

Dossier CMP Arles : 783

Page/Sheet 1/6

Client / Customer : AIR LIQUIDE AGS GmbH

Engineered System N° :

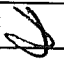
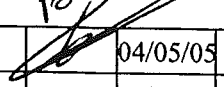
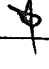
1 RESERVOIR DE STOCKAGE LOX 1800MT

1 X 1800MT LOX STORAGE TANK

TUBULURE G1 (DN 150)

NOZZLE G1

SAFETY LINE

3		04/05/05	DUPRESSOIR		04/05/05	HULIN		04/05/05	LEBOUCQ		
1		13/12/04	NANTIER		13/12/04	HULIN		13/12/04	LEBOUCQ		
EDITION EDITION N°	REFERENCE CLIENT REF.	DATE	NOM NAME	SIGN.	DATE	NOM NAME	SIGN.	DATE	NOM NAME	SIGN.	ETAT D'AVANC. STATUS
REDACTEUR DRAWN UP BY				VERIFICATEUR CHECKED BY				APPROBATEUR APPROVED BY			

Projet : **ASU No.9 KOSICE**
ProjectClassement CMP Arles : **783-14.G1**
CMP Arles document N°

Ce document est la propriété de CMP Arles. Il ne pourra sans autorisation écrite être utilisé ou communiqué à des tiers, toutes précautions utiles seront prises pour éviter sa divulgation.

This document is the property of the CMP Arles. It may not be used or transmitted to third parties without the written consent of the company. All necessary precautions shall be taken to avoid disclosure.

Page/Sheet 2/6

Plan N° : 783-14.G1

INDICE DE REVISION: 0 /A /B / / / /

revision number

*This document is the property of the CMP Arles. It may not be used or transmitted to third parties without the written consent of the company.
All necessary precautions shall be taken to avoid disclosure.*

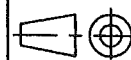
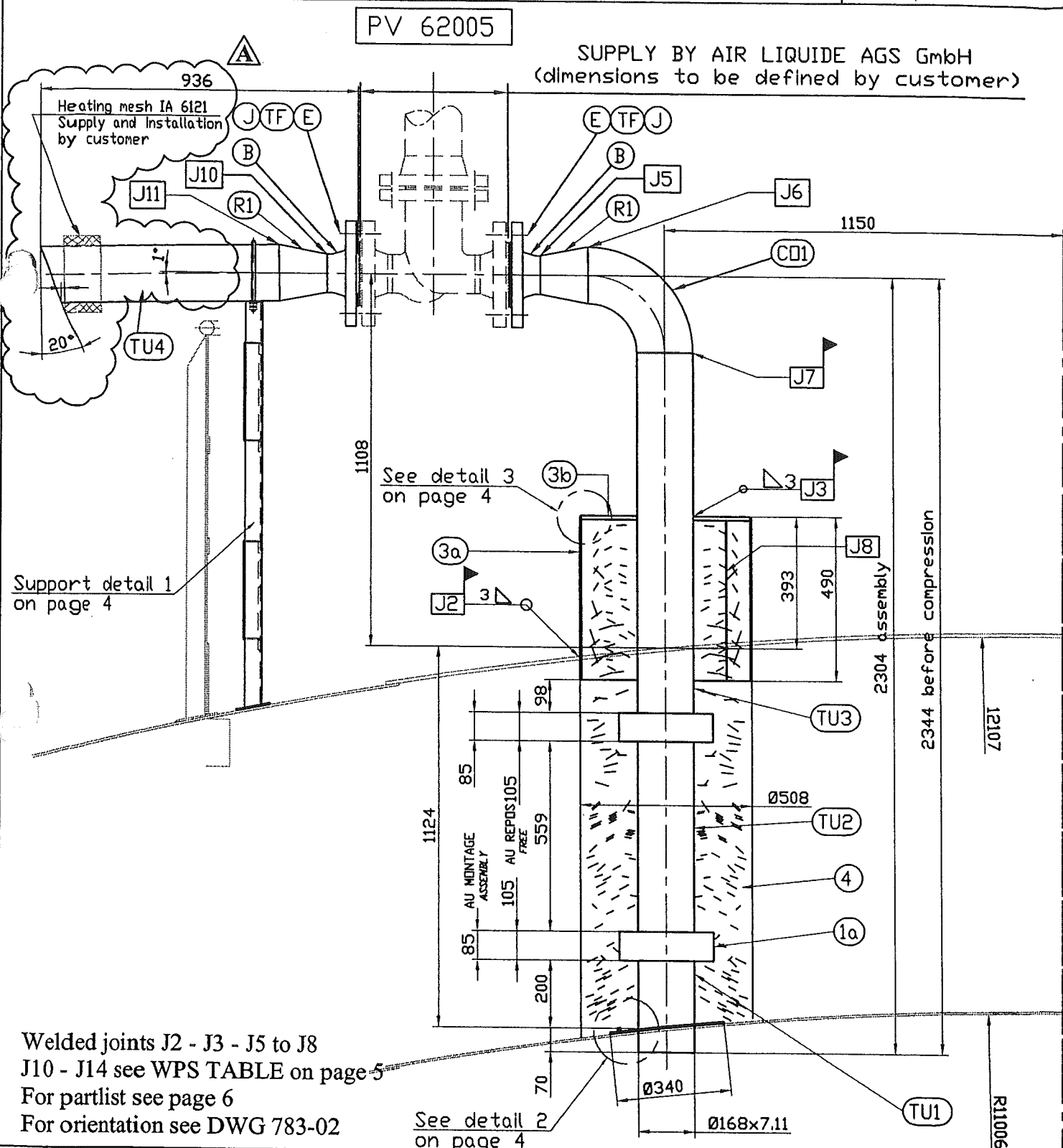
Dossier CMP Arles : 783

Page/Sheet 3/6

Client / Customer : AIR LIQUIDE AGS GmbH

Engineered System N° :

Rev A

Plan N° : 783-14.G1**NOZZLE G1** Echelle/Scale
1/16

Welded joints J2 - J3 - J5 to J8

J10 - J14 see WPS TABLE on page 5

For partlist see page 6

For orientation see DWG 783-02

See detail 2
on page 4

Ce document est la propriété de CMP Arles. Il ne pourra sans autorisation écrite être utilisé ou communiqué à des tiers, toutes
précautions utiles seront prises pour éviter sa divulgation.

This document is the property of the CMP Arles. It may not be used or transmitted to third parties without the written consent of the company.
All necessary precautions shall be taken to avoid disclosure.

Dossier CMP Arles : 783

Client / Customer : AIR LIQUIDE AGS GmbH

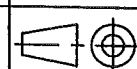
Engineered System N° :

Plan N° : 783-14.G1

DETAILS 1 to 3

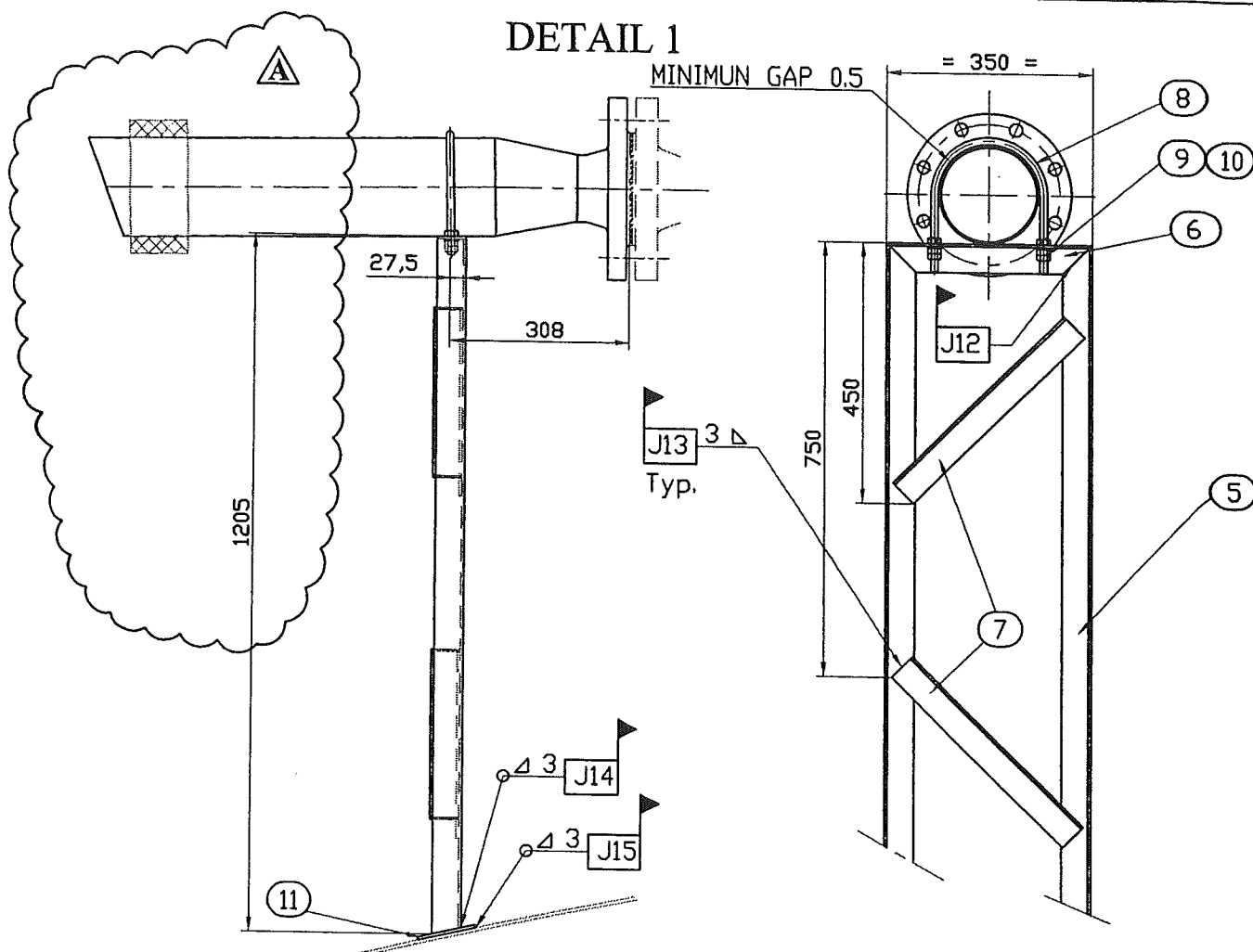
Page/Sheet 4/6

Rev A

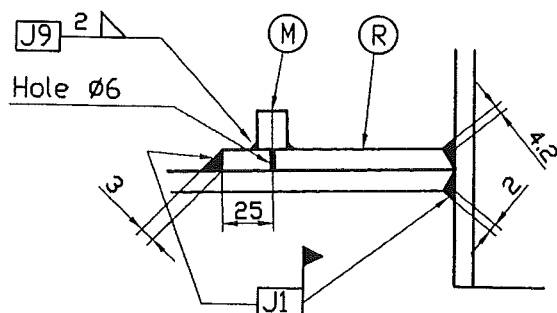


Echelle/Scale
1/12

DETAIL 1

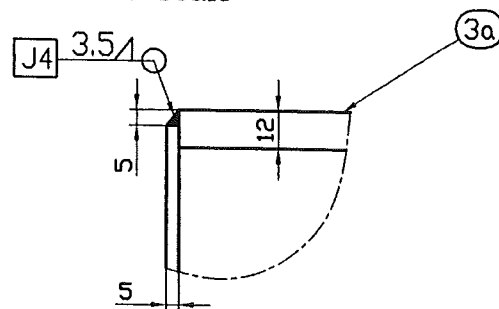


DETAIL 2



DETAIL 3

Not to scale



Welded joints J1 - J4 - J9 - J13 to J15 see WPS TABLE on page 5

For partlist see page 6

For orientation see DWG 783-02

Ce document est la propriété de CMP Arles. Il ne pourra sans autorisation écrite être utilisé ou communiqué à des tiers, toutes précautions utiles seront prises pour éviter sa divulgation.

This document is the property of the CMP Arles. It may not be used or transmitted to third parties without the written consent of the company.
All necessary precautions shall be taken to avoid disclosure.

*This document is the property of the CMP Arles. It may not be used or transmitted to third parties without the written consent of the company.
All necessary precautions shall be taken to avoid disclosure.*

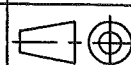
Dossier CMP Arles : 783

Page/Sheet 6/6

Client / Customer : AIR LIQUIDE AGS GmbH

Engineered System N° :

Rev A

Plan N° : 783-14.G1**NOMENCLATURE/LISTE DE COLISAGE**
PART LIST/PACKING LIST

Echelle/Scale

NOZZLE G1					
S/E.1	1	SUB-ASSEMBLY INCLUDING ITEMS:			15
R1	1	REDUCTION 4"/6" (Concentric reducer 4"/6" Sch 10S)	A	A403 WP304L /	
B	1	BRIDE (flange) 4" WN 150# RF ANSI B16.5 Ra : 3,2 to 6,3		A182 F304L /	
CO1	1	COUDE (elbow) RS LR 6"sch 10S		A403 WP304L	
S/E.2	1	SUB-ASSEMBLY INCLUDING ITEMS:			50
3a	1	TOLE (plate) Thk.12		A240 304/304L /	
3b	1	MANCHETTE (pipe) Ø508 O.D Thk.5		A240 304/304L /	
S/E.3	1	SUB-ASSEMBLY INCLUDING ITEMS:			3
R	1	TOLE (plate) Ø340x6		A240 304 3.1b	
M	1	1/2 MANCHON(half coupling) 1/4" NPT		304L/316L* /	
S/E.4	1	SUB-ASSEMBLY INCLUDING ITEMS:			30
1a	2	COMPENSATEUR (compensator) DN6" PN1		321 3.1b	
TU1	1	TUBE (pipe) ESS 6" Sch 40S		A312 TP304L 3.1b	
TU2	1	TUBE (pipe) RS 6" Sch 10S		A312 TP304L /	
TU3	1	TUBE (pipe) RS 6" Sch 10S		A312 TP304L /	
S/E.5	1	SUB-ASSEMBLY INCLUDING ITEMS:			21
R1	1	REDUCTION 4"/6" (Concentric reducer 4"/6" Sch 10S)	A	A403 WP304L /	
B	1	BRIDE (flange) 4" WN 150# RF ANSI B16.5 Ra : 3,2 to 6,3		A182 F304L /	
TU4	1	TUBE (pipe) RS 6" Sch 10S Lg.805		A312 TP304L /	
PIECES LIVREES NON ASSEMBLEES					
ITEMS DELIVERED IN SEPARATES PARTS					
4	0.5	ROULEAU DE LAINE DE ROCHE (rockwool rool)		/	5
E	32 + 4	ECROU (nut) HM16		A194 8M /	1.6
TF	16 + 2	TIGE FILETEE (threaded stud) M16x100		A193 B8M Cl 1 /	3.2
J	2	JOINT (gasket) Ø174x114x3		KLINGERSIL /	0.1
				C4430	
5	2	TOLE PLIEE (plate) U 50x50 thk.5 Lg.1450 (1)		A240 304/304L /	11
6	1	TOLE PLIEE (plate) U 50x50 thk.5 Lg.350		A240 304/304L /	1.5
7	2	TOLE PLIEE (plate) U 50x50 thk.5 Lg.410		A240 304/304L /	3.1
8	1	ETRIER FILETE (threaded stirrup) Ø12 for pipe 6"		SS /	0.1
9	6	ECROU (nut) HM12		SS /	0.1
10	2	RONDELLE (washer) L12		SS /	0.1
11	2	TOLE (plate) 100x100x5		A240 304/304L /	1
					146

SUPPLY BY CMP Arles

Ce document est la propriété de CMP Arles. Il ne pourra sans autorisation écrite être utilisé ou communiqué à des tiers, toutes précautions utiles seront prises pour éviter sa divulgation.

This document is the property of the CMP Arles. It may not be used or transmitted to third parties without the written consent of the company. All necessary precautions shall be taken to avoid disclosure.